



MMP - DIGITAL LENGTH GAUGE

METROLOGY SOLUTIONS

The Kentucky Gauge MMP Digital Length Gauge offers a rugged alternative to delicate calipers that often get lost or damaged. Not only does the MMP boast larger anvils than calipers, it is also available in longer lengths and offers an optional non-marring surface for the material to rest while being measured. Thus, eliminating errors from the tool being misaligned with the surface of the part.



2-YEAR WARRANTY

Key Features

- Easy-to-read LCD digital readout
- Inch, mm and fractional display with direct push-button conversion
- Calibration certificate included
- RS232 interface (optional)
- Adjustable parameters for presets, datum and offsets
- Precision ground tool steel anvils
- Customizable to fit application requirements
- Field replaceable components
- Can be mounted to a dedicated table top or optional UHMW base for portability

Specifications

Resolution	0.001", 0.01mm, 1/64"
Repeat-accuracy	0.001"/ 0.01mm
Anvil size	3.375" x 2.50" standard
Operating temperature	0°C - 50°C (32°F - 122°F)
Protection	Scale: IP67 Display: IP60
Power supply	'C' battery
Measuring technology	Magneto-resistive
Measuring range	Unlimited

Specifications subject to change

INDUSTRY-BEST 2-YEAR WARRANTY

MADE IN THE USA



MMP - DIGITAL LENGTH GAUGE

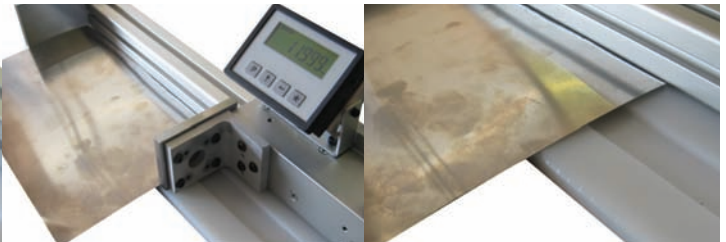
METROLOGY SOLUTIONS

Customized application examples



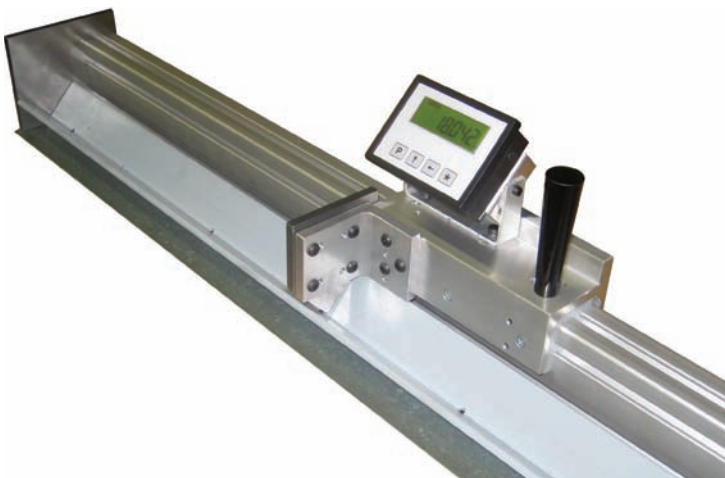
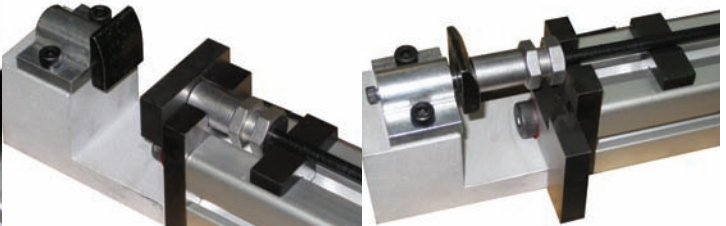
Thin sheeting

To ensure the sheeting didn't slip underneath the anvils, a step was cut into the UHMW surface and custom anvils were machined to ride inside the slot. Similar applications include shim stock, thin gauge sheet metal and paper labels.



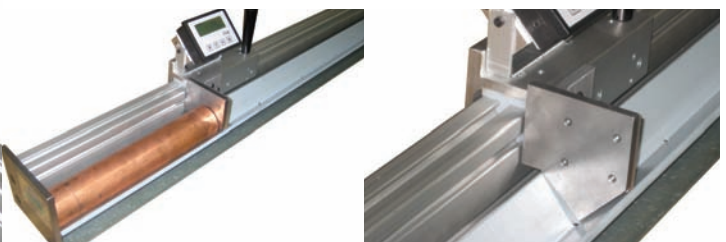
Brake lines

A unique rotating anvil was manufactured to allow for measuring the length of the brake line, including the fitting, and also measure the length of the brake line only. Custom v-blocks were also manufactured to allow the brake line to remain straight during operation.



Round bars and tubing

A channel can be added to hold round material in place while being measured. Custom anvils are also manufactured to travel inside the channel to ensure contact with the material regardless of the diameter.



BULLETIN NO: MMP-0515



MMT - MEASURING GAUGE

SINGLE AND MULTIAXIS METROLOGY SOLUTIONS

The Kentucky Gauge MMT Digital Measuring Gauge is designed to simplify the quality control process of measuring overall part dimensions. The MMT functions similarly to digital calipers, but features a more robust construction. Additionally, the integrated table prevents the operator from needing to hold the part or the measuring tool, which can often be cumbersome with larger parts.



2-YEAR WARRANTY

Key Features

- Non-contact linear encoder for direct and precise measuring
- 5.7" color TFT screen with segmented error compensation for near perfect measuring accuracy
- Simulated absolute encoder functionality to ensure you do not lose positional information when the readout is powered off
- Integrated mar-free work table
- Available in any length - *No limitations*
- Maintenance -free stainless steel roller bearings
- Customized to fit application requirements

Specifications

Resolution	0.0001", 0.001mm
Encoder accuracy	± 0.0002"
MMT repeat-accuracy	± 0.0002" / 0.005mm
Jaw size	6" x 4"
Working height	36", adjustable
Operating temperature	5°C - 45°C
Protection rating	Scale: IP67 Readout: IP54 (front)
Power supply	110 VAC, 15 amp
Measuring technology	Magnetostrictive
Measuring range	Unlimited

Specifications subject to change

INDUSTRY-BEST 2-YEAR WARRANTY

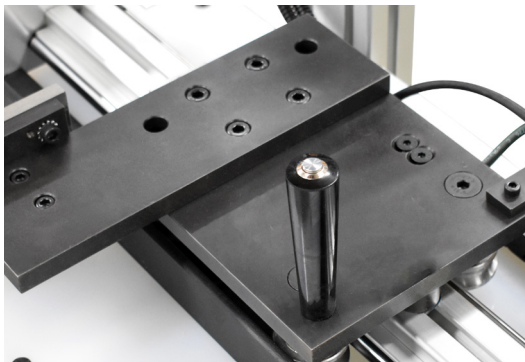
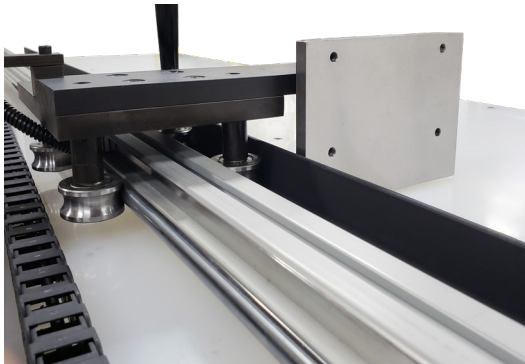
MADE IN THE USA



MMT - MEASURING GAUGE

SINGLE AND MULTIAXIS METROLOGY SOLUTIONS

1-, 2- and 3-Axis Systems Available



SPC Output

- Intuitive SPC output included
- Simple push button data transmission to any Windows PC software.
- No proprietary software required
- Optional USB storage available for data points

Table Options

- Polypropylene table top provides a mar-free work surface to prevent damaging finished parts
- Stainless steel and galvanized steel table top options available
- Caster wheels with locks for portability
- Height adjustable stands included (27-39")

Jaw Options

- Precision ground O1 tool steel
- Hardened O1, A2, or D2 tool steel options available to meet customer requirements
- Aluminum jaws
- Mar-free jaw attachments
- Custom jaw sizes
- Hole-to-hole measuring fixtures
- Custom jaw fixtures

Applications

- Metal flat bars and sheets
- Round tubing
- Square/rectangular tubing
- Metal angles
- Wood panels
- Dimensional lumber and boards
- Flooring planks
- Window and door glass panels
- Ceramic tiles
- Cabinetry
- Aviation components
- Marine components
- Cabin air filters
- Shim stock



MMV - MEASURING GAUGE

METROLOGY SOLUTIONS

The Kentucky Gauge MMV Measuring Gauge is designed to simplify the quality control process of measuring overall dimensions of round parts. The MMV features a more robust construction and integrated v-blocks to make measuring round parts much more user friendly. A rigid support stand is included with optional casters for portability.



2-YEAR WARRANTY

Key Features

- Non-contact linear encoder for direct and precise measuring
- Swivel mounted 5.7" color TFT screen with segmented error compensation for near perfect measuring accuracy
- Simulated absolute encoder functionality to ensure you do not lose positional information when the readout is powered off
- Integrated stand with keyed v-blocks
- Available in any length - *No limitations*
- Maintenance -free stainless steel roller bearings
- Customized to fit application requirements

Specifications

Resolution	0.0001", 0.001mm
Encoder accuracy	± 0.0002"
MMT repeat-accuracy	± 0.0002" / 0.005mm
Jaw size	Up to 6" OD standard
Working height	36", adjustable
Operating temperature	5°C - 45°C
Protection rating	Scale: IP67 Readout: IP54 (front)
Power supply	110 VAC, 15 amp
Measuring technology	Magnetostrictive
Measuring range	Unlimited

Specifications subject to change

INDUSTRY-BEST 2-YEAR WARRANTY

MADE IN THE USA



MMV - MEASURING GAUGE

METROLOGY SOLUTIONS

Precision Measuring for Round Parts

SPC Output

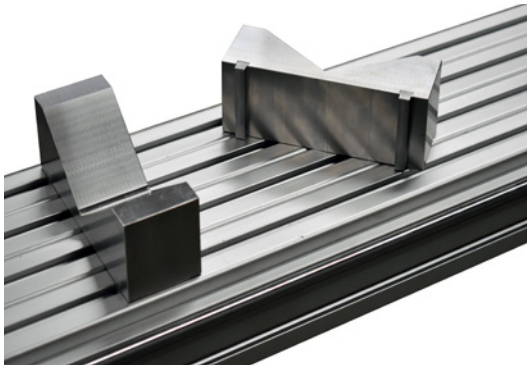
- Intuitive SPC output included
- Simple push button data transmission to any Windows PC software.
- No proprietary software required
- Optional USB storage available for data points

Options and Accessories

- Caster wheels with locks
- Battery powered digital readout for increased portability
- V-channel for full support of soft or pliable parts
- Tabletop version
- 1-, 2- and 3-axis available

Jaw and V-block Options

- Hardened O1, A2, or D2 tool steel options available for jaws or v-blocks to suit application requirements
- Stainless steel options available for jaws or v-blocks for high humidity or clean room environments
- Aluminum jaws and v-blocks
- Increased sizes for larger diameters
- Custom jaws and v-blocks to meet various application requirements



BULLETIN NO: MMV-0220