



 **magswitch<sup>®</sup>**  
Changing the way things are done.



Technology That Attracts.™



Magswitch Technology, headquartered in Colorado, USA is a leader in switchable magnetic technology. From initial development, design and engineering to manufacturing, final delivery and distribution, Magswitch has paved the way for innovation in multiple industries across the globe.

Magswitch has evolved from manufacturing magnetic tools to engineering innovative technology to increase safety, productivity and speed in industries such as welding, fabrication, automation, manufacturing, heavy industry, woodworking and more.

With numerous patents and patents pending in all industrialized markets across the globe, Magswitch has evolved into an global integrated business. We are committed to a business model that identifies key industry partners, allowing the corporation to leverage its technology and products through recognized global distributors.

**but first**



We consider safety in everything we do. If you work around steel, safety is the first consideration. Fewer hands on the job touching steel, means a safer workplace. Safety is crucial to our products - easy actuation, lighter lifting, stability control and lift-to-shear capabilities all tie back to an emphasis on safety.



**7** Worldwide  
Magswitch  
Locations

**65+** Patents/  
Patents  
Pending

**250+** Unique  
Magswitch  
Solutions

**1000+** Worldwide  
Magswitch  
Dealers

## Changing The Way Things Are Done.

*"The Magswitch management team is made up of visionary leaders and enthusiastic youth who constantly strive for innovation within a "can-do" culture. The key to our success is our love for competition, as this is what is imprinted in our DNA."*







## Catalog Guide

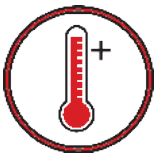
- 3** Welding & Heavy Fabrication
- 13** Drilling
- 15** Material Handling & Alignment
- 19** Lifting Tools & Frames
- 27** New To Magswitch: ELAY Series
- 29** Heavy Lifting Solutions
- 31** Woodworking
- 35** Custom Products
- 37** Application Services
- 39** Automation



Every Magswitch product is proudly developed, manufactured and tested by Magswitch to ISO 9001:2015 standards.



Safety is our primary design consideration. We focus on reducing accidents and injuries in workplaces.

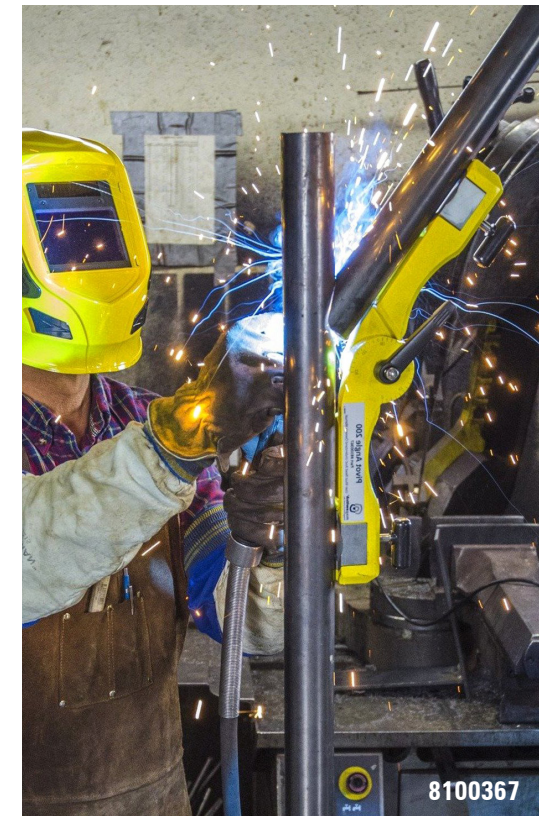


Look for our high heat tools. Magswitch tools are capable of handling up to 742° Fahrenheit (350° Celsius).



Magswitch products are a green technology utilizing the enduring power of rare earth magnets with low energy consumption.

**Technology That Attracts.™**



# WELDING & HEAVY FABRICATION

Changing The Way Welding & Fabrication is done!

At Magswitch, our Welding & Heavy Fabrication tools are engineered to drive productivity for professional welders and fabricators. Large sheet leveling, sheet de-stacking, fixturing, weld grounding, mounting, workholding, positioning, fitting and many more applications are performed significantly faster with our products. The true ON and OFF capabilities of Magswitch tools create a platform that is more efficient, faster, safer and easier to us!

## Product Lineup

- MagSquares
- Ground Clamps
- MagWheels
- MagTethers
- MagMounts
- Angle Tools
- MagHooks
- MagYoke



8100238



## Customer Review

### MagSquare 400

*The MagSquare 400 is a high-quality product. The magnet is very strong. I used three of them to make a mag base for my laser tracker. My base cost me a fraction of the price and its way more powerful than the mag bases on the market.*



8100438

**Grinding with Multi Angle 400**



8100495

**Angled Positioning with 90 Degree Angle 600**



8100367

**Fixturing with Pivot Angle 200**



8100099

**Fabricating/Cutting with MagSquare 1000**

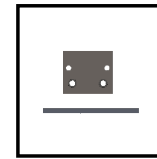
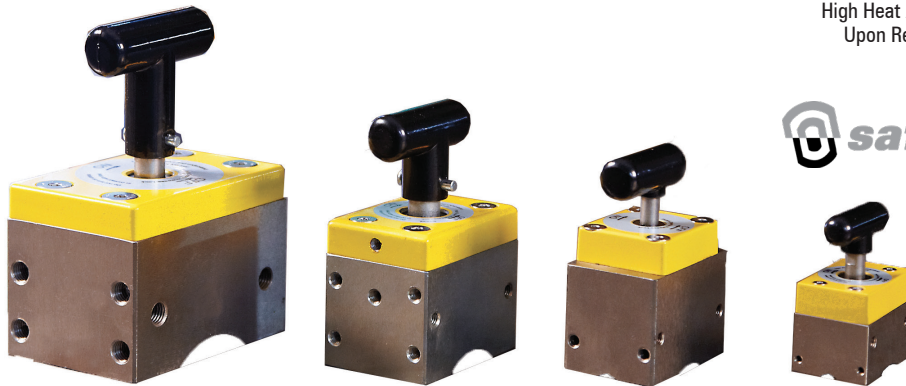


# MagSquares

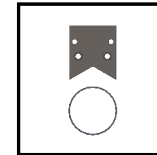
## Applications: Fixturing, Workholding, Mounting

Magswitch magnetic squares are the most versatile workholding and fixturing tool ever! Align and secure flat or round pieces of steel to fabricate angles. Pull corners, secure steel for cutting, use as a guide, make your own fixtures and more with our MagSquares.

- Multiplane magnetic grip on 5 sides
- Machined at 90-degrees with pre-tapped holes for mounting
- Mounts anywhere - no limitations like clamps
- Magnet turns completely On and Off
- Magnet stays clean as it is easy to wipe debris off
- Does not require an electrical power source
- Holds flat and round surfaces of steel



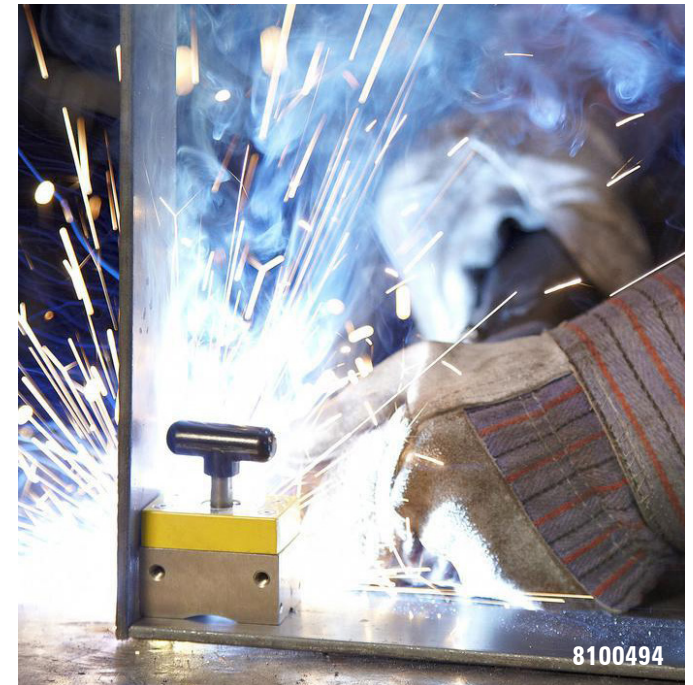
FLAT



ROUND



High Heat Available  
Upon Request



	MagSquare 1000	MagSquare 600	MagSquare 400	MagSquare 165
<b>Part #</b>	8100099	8100106	8100238	8100494
<b>Max Breakaway</b>	1052 lbs (477 kg)	607 lbs (275 kg)	399 lbs (181 kg)	150 lbs (68 kg)
<b>Height</b>	5.8 in (146.9 mm)	4.1 in (105.4 mm)	3.6 in (90.3 mm)	2.5 in (64.3 mm)
<b>Width</b>	2.8 in (72 mm)	2 in (51.5 mm)	1.6 in (41.3 mm)	1.2 in (31 mm)
<b>Length</b>	4.3 in (108 mm)	3 in (75 mm)	2.5 in (64 mm)	1.9 in (48 mm)
<b>Weight</b>	7.9 lbs (3.6 kg)	3.1 lbs (1.4 kg)	2.0 lbs (0.9 kg)	0.7 lbs (0.3 kg)



8100552



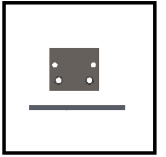
8100746

## Ground Clamps

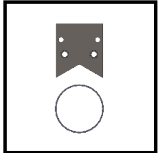
### Applications: Grounding, Welding

Magswitch magnetic ground clamps come with the new fin design which lowers temperature. With our ground clamps, no more tacking necessary. Simply place our magnetic ground clamp on a clean work surface, turn on and start welding!

- Fast setup as it instantly grounds to flat and round surfaces of steel
- Stronger hold in the shear (vertical) position allows for use with heavy gauge cable
- No more tacking on tabs and searching for ground location
- New fin design lowers temperature by 27%.
- Magnet turns completely On and Off
- Magnet stays clean as it is easy to wipe debris off
- Does not require an electrical power source



FLAT



ROUND



	800 Amp Ground Clamp	600 Amp Ground Clamp	300 Amp Ground Clamp
<b>Part #</b>	8100552	8100747	8100746
<b>Max Breakaway</b>	300 lbs (136 kg)	200 lbs (89 kg)	90 lbs (41 kg)
<b>Height</b>	2.9 in (73.9 mm)	2.6 in (65.5 mm)	2.3 in (57.3 mm)
<b>Width</b>	3.9 in (98.6 mm)	3.1 in (78.5 mm)	1.9 in (49 mm)
<b>Length</b>	4.9 in (125.6 mm)	4.2 in (105.6 mm)	2.9 in (73.1 mm)
<b>Weight</b>	3.5 lbs (1.6 kg)	1.8 lbs (0.8 kg)	0.9 lbs (0.4 kg)

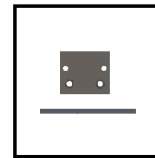


# MagWheels

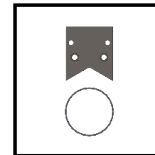
## Applications: Fitting, Positioning, Guiding, Fixturing, Pipe Handling

Magswitch magnetic wheels have a powerful connection to drive units on any ferrous surface enabling flat, vertical or inverse travel. Ideal for positioning and guiding, sheet feeding, pipe handling, fitting and fabrication, and numerous OEM automation and fixturing applications.

- Magnetic rotating elements with potential to automate
- Non-marring hold
- Can be fitted with drive units for mobile applications
- Climbing, carrying and driving anywhere above/below magnetic surface
- Magnet turns completely On and Off
- Magnet stays clean
- Does not require an electrical power source
- Holds to flat and round surfaces of steel



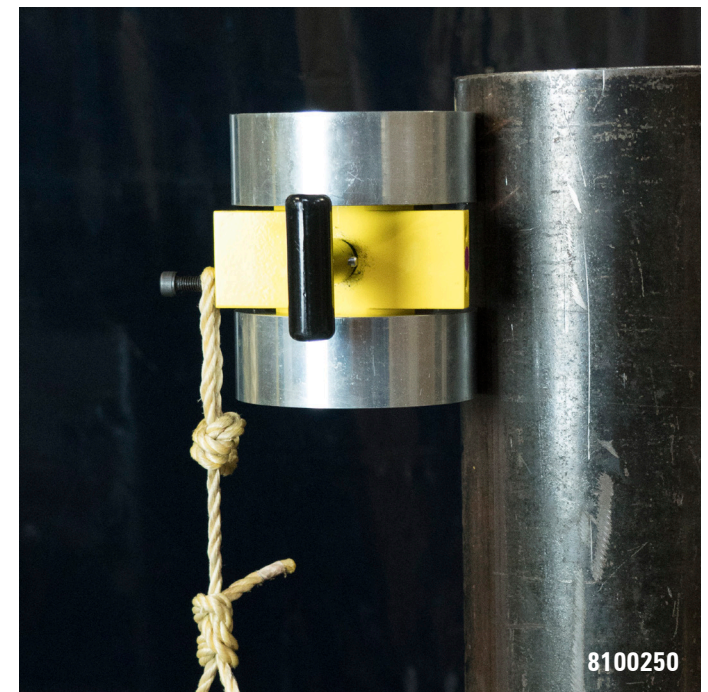
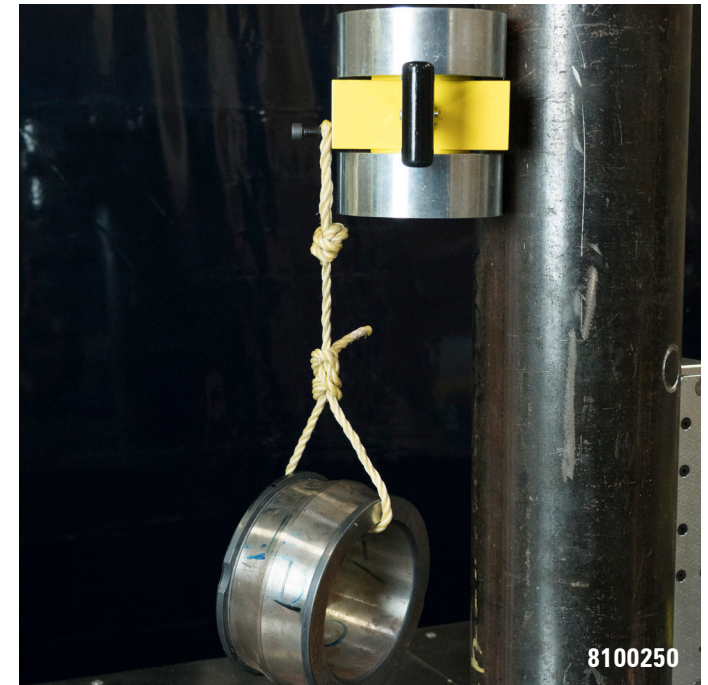
FLAT



ROUND

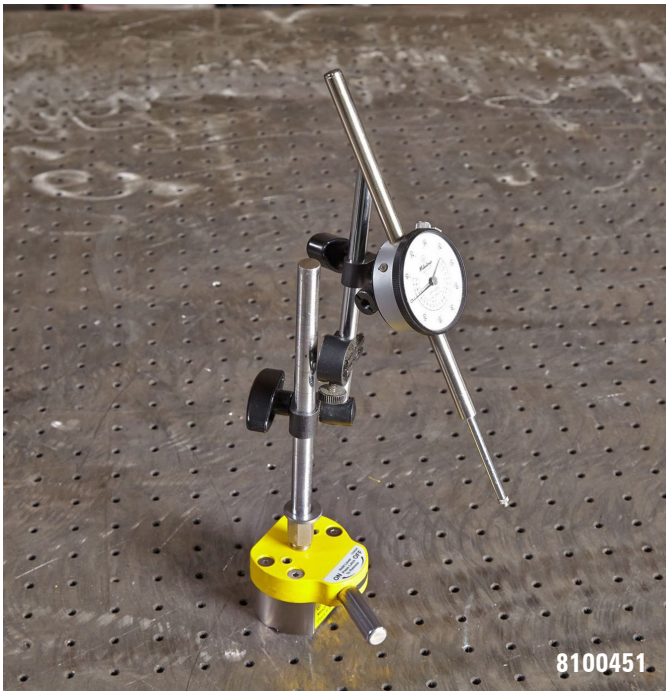


	MagWheel 1000	MagWheel 600	MagWheel 150	MagWheel 95
<b>Part #</b>	8100250	8100075	8100074	8100401
<b>Max Breakaway</b>	528 lbs (239 kg)	292 lbs (132 kg)	65 lbs (29 kg)	38 lbs (17 kg)
<b>Height</b>	6.9 in (175 mm)	4.8 in (121.7 mm)	2.8 in (71.2 mm)	2.2 in (55.7 mm)
<b>Width</b>	5 in (127 mm)	3.6 in (92 mm)	2 in (52 mm)	1.6 in (41 mm)
<b>Length</b>	7.1 in (180.4 mm)	4 in (101 mm)	2.7 in (67.8 mm)	2.2 in (56.3 mm)
<b>Weight</b>	19.8 lbs (9 kg)	6.6 lbs (3 kg)	2.2 lbs (1 kg)	0.7 lbs (0.3 kg)





8100523



8100451

# MagMounts

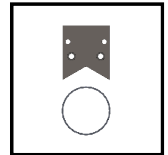
## Applications: Mounting, Hanging

Magswitch MagMounts allow for easy movement and placement of a tool. With a single On and Off lever, you have strong magnetic hold force at your disposal. The top of the tool is ready for mounting a variety of accessories.

- Fixed bar magnet is for flat steel
- Swivel bar magnet is for round or uneven shapes
- Multiple threaded holes on the top
- Perfect for top mount tools, measuring and security devices
- Magnet turns completely On and Off
- Magnet stays clean
- Does not require an electrical power source
- Holds flat and round surfaces of steel



FLAT



ROUND



High Heat Available  
Upon Request



	MagMount 600	MagMount 400	MagMount 300	MagMount 235	MagMount 150
<b>Part #</b>	8100580	8100523	8100595	8100451	8100579
<b>Max Breakaway</b>	522 lbs (237 kg)	420 lbs (191 kg)	246 lbs (111 kg)	216 lbs (98 kg)	104 lbs (47 kg)
<b>Height</b>	2.8 in (71 mm)	2.6 in (65 mm)	1.7 in (44 mm)	1.7 in (44.2 mm)	1.6 in (40 mm)
<b>Width</b>	4.1 in (104.4 mm)	3.2 in (82.3 mm)	4.1 in (104.4 mm)	3.75 in (95 mm)	2.2 in (55.4 mm)
<b>Length</b>	4.7 in (120 mm)	4.6 in (116 mm)	5.3 in (135 mm)	2.1 in (53.3 mm)	3.1 in (78.4 mm)
<b>Weight</b>	3.5 lbs (1.6 kg)	2.4 lbs (1.1 kg)	2 lbs (0.9 kg)	1.2 lbs (0.6 kg)	0.9 lbs (0.4 kg)

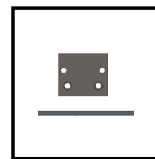


# MagTethers

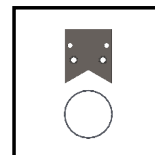
## Applications: Underwater Tethering, Welding, Oil & Gas, Military

Magswitch MagTethers help you tether you or your equipment while working above and below water. Our MagTether is sealed with a marine grade corrosion resistant coating to hold up to saltwater.

- Safety latch to turn On and Off
- Quick connect and disconnect
- Alongside and below the surface mooring
- Noise suppressing coating
- Ideal for underwater tethering, military and commercial oil and gas applications.
- Magnet turns completely On and Off
- Magnet stays clean
- Does not require an electrical power source



FLAT



ROUND



8100051



	MagTether 1000	MagTether 600	MagTether 300
<b>Part #</b>	8100051	8100077	8100111
<b>Max Breakaway</b>	1052 lbs (477 kg)	607 lbs (275 kg)	247 lbs (112 kg)
<b>Height</b>	6 in (153.4 mm)	5 in (127.3 mm)	4.2 in (107.3 mm)
<b>Width</b>	6.2 in (158.3 mm)	4.9 in (124.4 mm)	4.9 in (124.4 mm)
<b>Length</b>	7.6 in (194 mm)	6.3 in (161 mm)	6.5 in (164 mm)
<b>Weight</b>	10 lbs (4.6 kg)	4 lbs (1.8 kg)	2.2 lbs (1 kg)



8100077

## Mini Angles

### Applications: Fixturing, Welding

Mini Angles are our magnetic workholding tool with multiple angles in one! They offer a wide range of angles: 45/135°, 60/120°, 75/105° and 90° angles. Extremely versatile welding and fabrication angle tools.

- Accommodates flat sheets and pipes
- Offers several common angles
- Sturdy and compact
- Magnet turns completely On and Off
- Magnet stays clean
- Does not require an electrical power source
- Holds flat and round surfaces of steel

## Pivot Angles

### Applications: Fixturing, Welding

Magswitch magnetic pivot welding angles offer a range of angles from 20 to 270 degrees with 5 degree indicators and detents. Two sides of the tool magnetize when turned on and can be secured to a table or wall to hold a fixture in place.

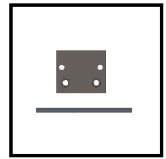
- Single lock at the elbow to secure your angle
- Dial on elbow has indicators every 5 degrees
- Detents at every 45 degrees for rapid adjustment
- Magnets turn completely On and Off
- Magnets stay clean
- Does not require an electrical power source
- Holds flat and round surfaces of steel

## MagVises

### Applications: Fixturing, Welding

Magswitch MagVises that you don't have to bolt in place! Perfect for drilling, cutting, grinding and beveling small to medium size pieces. Switch On/Off for magnetic hold force by rotating the knob. When you're done, just carry it to where it's needed next.

- Offers 45/135° + 60/120° + 75/105° + 90° angles
- Doubles as a multi-angle work holding tool
- Vise options include round, angle stock, square bar or flat
- Magnet turns completely On and Off
- Magnet stays clean
- Does not require an electrical power source
- Holds flat and round surfaces of steel



FLAT



ROUND



	Mini Angle 400	Mini Angle W/ 200 Amp Ground	Mini Mutli Angle	Mini Angle	Pivot Angle 150	Pivot Angle 200	MagVise 1000	MagVise 1500
<b>Part #</b>	8100438	8100351	8100350	8100352	81001215	8100367	8100450	8100897
<b>Max Breakaway</b>	205 lbs (93 kg)	76 lbs (34 kg)	76 lbs (34 kg)	76 lbs (34 kg)	130 lbs (59 kg)	215 lbs (98 kg)	413 lbs (187 kg)	788 lbs (357 kg)
<b>Height</b>	3.8 in (95.5 mm)	3.4 in (86.3 mm)	2.6 in (65.7 mm)	2.1 in (53.7 mm)	8.3 in (210 mm)	1.75 in (44.45 mm)	5.4 in (138 mm)	6.3 in (161 mm)
<b>Width</b>	2.6 in (65 mm)	1.7 in (42 mm)	1.3 in (32 mm)	1.3 in (32 mm)	2.9 in (72.5mm)	2.75 in (70 mm)	4.3 in (110 mm)	6 in (152.7 mm)
<b>Length</b>	5.1 in (129 mm)	3.6 in (90.5 mm)	2.8 in (72.3 mm)	2.3 in (59.5 mm)	8.3 in (210 mm)	15 in (38 mm)	5.9 in (149.8 mm)	7.1 in (179.7 mm)
<b>Weight</b>	2.6 lbs (1.2 kg)	0.9 lbs (0.4 kg)	0.4 lbs (0.2 kg)	0.4 lbs (0.2 kg)	3.2 lbs (1.5 kg)	3.6 lbs (1.63 kg)	9.7 lbs (4.4 kg)	21.2 lbs (9.6 kg)







## 90 Degree Angles

### Applications: Fixturing, Welding

Magswitch 90 Degree Angles deliver superior accuracy, efficiency and speed at a fixed 90-degree welding angle. Simply adjust the MagSquares by sliding them up or down on each axis for unmatched versatility.

- Lightweight with incredible strength
- Precision positioning
- MagSquares can be reversed on each axis
- Magnets turn completely On and Off
- Magnets stay clean
- Does not require an electrical power source
- Holds to flat and round surfaces of steel

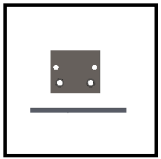


## BoomerAngles

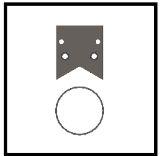
### Applications: Fixturing, Welding

Magswitch BoomerAngles feature a rotating MagSquare at each axis which provides virtually unlimited angles including a pre-set for 90-degree holding. Easy On and Off by rotating the black knobs.

- Adjustable angle holds
- Position for odd angles in seconds
- Non-marring hold
- Magnets turn completely On and Off
- Magnets stay clean
- Does not require an electrical power source
- Holds flat and round surfaces of steel



FLAT



ROUND

	90 Degree Angle 1000	90 Degree Angle 600	90 Degree Angle 400	90 Degree Angle 165	Boomer Angle 600	Boomer Angle 400	Boomer Angle 150
<b>Part #</b>	8100503	8100495	8100454	8100548	8100090	8100453	8100091
<b>Max Breakaway</b>	1052 lbs (477 kg)	607 lbs (275 kg)	401 lbs (182 kg)	122 lbs (55 kg)	607 lbs (275 kg)	205 lbs (93 kg)	109 lbs (49 kg)
<b>Height</b>	11.2 in (287 mm)	11.2 in (287 mm)	11.2 in (287 mm)	8.1 in (205 mm)	10.1 in (257.5 mm)	10 in (254 mm)	7.5 in (190.5mm)
<b>Width</b>	5.8 in (146.6 mm)	3.9 in (100 mm)	3.5 in (89.3 mm)	3 in (76.8 mm)	6.5 in (164.3 mm)	2.6 in (66 mm)	3 in (76.2 mm)
<b>Length</b>	18.7 lbs (474 mm)	11.2 in (287 mm)	11.2 in (287 mm)	8.1 in (205 mm)	10.1 in (258 mm)	11 in (279.4 mm)	7.5 in (190.5 mm)
<b>Weight</b>	10.2 lbs (4.6 kg)	8.2 lbs (3.7 kg)	6.2 lbs (2.8 kg)	1.8 lbs (0.8 kg)	9.7 lbs (4.4 kg)	7 lbs (3.1 kg)	2.7 lbs (1.3 kg)



# MagHooks



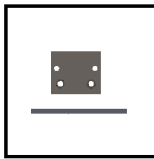
## Applications: Utility Hooks, Welding, Fabricating

Need a helping hand? Organize your workspace with our magnetic hook by hanging tools, lights, wires, cables and more.

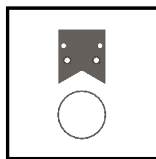
- Instantly attaches to flat and round surfaces
- Locking hand for safety
- Lightweight and reliable
- Convenient and easily move from job to job
- Magnet turns completely On and Off
- Magnet stays clean
- Does not require an electrical power source



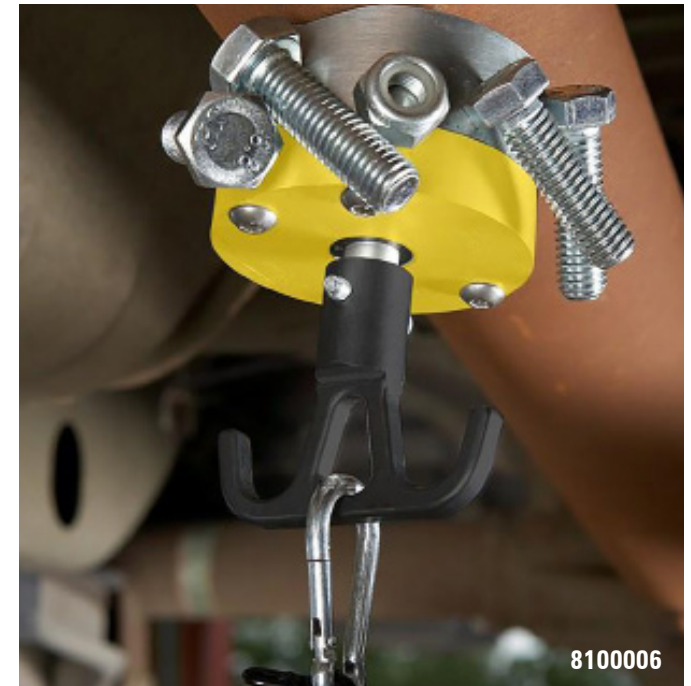
	Mag-Utility Hook 40	Mag-Utility Hook 25
<b>Part #</b>	8100006	8100012
<b>Max Breakaway</b>	202 lbs (92 kg)	115 lbs (52 kg)
<b>Height</b>	4.1 in (103 mm)	3.5 in (89.3 mm)
<b>Width</b>	2.7 in (69 mm)	1.6 in (40 mm)
<b>Length</b>	2.7 in (69 mm)	1.9 in (47.4 mm)
<b>Weight</b>	1.8 lbs (0.8 kg)	0.4 lbs (0.2 kg)



FLAT



ROUND



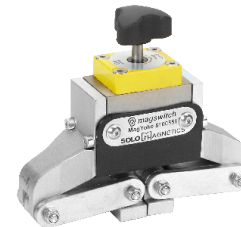
8100006

# MagYoke

## Applications: Weld Joints, Magnetic Particle Inspection

The permanent magnetic Yoke gives the user the ability to perform magnetic particle inspection without an electrical power source. It has all the advantage of a permanent Yoke system without the problems related to adhesion of metal particles.

- Non-destructive testing of weld joints
- Full yoke system testing capabilities
- Using patented ON-OFF switchable magnets, test welds without an electrical power source
- OFF position allows tool to easily be removed from material
- Significantly reduces metal to metal sparking
- Lightweight and compact



	MagYoke
<b>Part #</b>	8100551
<b>Max Breakaway</b>	97 lbs (44 kg)
<b>Height</b>	6.5 in (165 mm)
<b>Width</b>	1.5 in (38 mm)
<b>Length</b>	5.5 lbs (139.7 kg)
<b>Weight</b>	6 lbs (2.7 kg)



8100551