



 **magswitch<sup>®</sup>**  
Changing the way things are done.



**Technology That Attracts.™**

# LIFTING TOOLS & SYSTEMS

Changing The Way Material Lifting is done!

At Magswitch, our lifting tools are the solution for your heavy lifting, plate handling applications, sheet alignment and de-stacking sheets. Our tools eliminate time consuming handling of hooks and chains when you load and unload your burn tables. Unlike older technology, Magswitch lifters exert full hold on thinner steel. With numerous impressive features such as dual hook, single hook, replaceable pole shoes and more, Magswitch lifters are increasing productivity and safety in every workplace.



8100089

## Product Lineup

- Heavy Lifters
- Manual Hand Lifters
- Electric Hand Lifters
- Heavy Lifter Frames



## Customer Review **MLAY600 Lifting Magnet**

*This was just what we were looking for. Good holding power and the right size for equipment disassembly on the shop floor. This cuts our time down significantly when performing planned maintenance repairs and adds a high level of safety to the operation.*



8100482

**Lifting Pipe with MLAY1000x6 Lifting Magnet**



8100403

**Lifting Steel with MLAY1000x3**



8800487

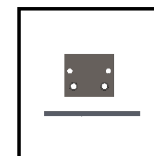
**Burn Tables with Hand Lifter 60 CE**



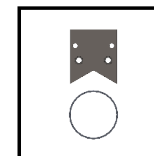
8100549

**Heavy Sheet Handling with MLAY1000x12**

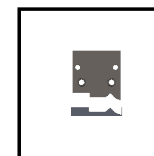
# Heavy Lifters



FLAT



ROUND



IRREGULAR

\*Requires Pole Shoes

## Applications: Lifting, Infrastructure, Shipyards

Magswitch Heavy Lifters are built for heavy-duty lifting. Our magnetic technology is powerful without the need for a power source. The dual lift hook offers the stability to lift horizontally and a single hook to lift into a vertical position.

- Lock On and Off handle
- Superior hold force on thin steel (70mm deep field)
- Compact, lightweight and easy actuation
- Lifts large flat sheets, beams and pipe
- Performs well on air gaps such as rust and dirt
- Customizable pole shoes to fit almost any application
- Magnet turns completely On and Off
- Magnet stays clean as you can wipe off debris easily
- Does not require an electrical power source

## MLAY600 Series

The Magswitch MLAY 600 series magnets are perfect for small materials and light to medium lifting. These lifters are lightweight, have a small profile and feature our full swivel hook for lifting from the top or the side. Each features a locking handle to ensure release of load is only intentional. With full field saturation, hold force at 0.5 in (12.7mm), these lifters are ideal for thinner steel, but hold thick steel just as well.

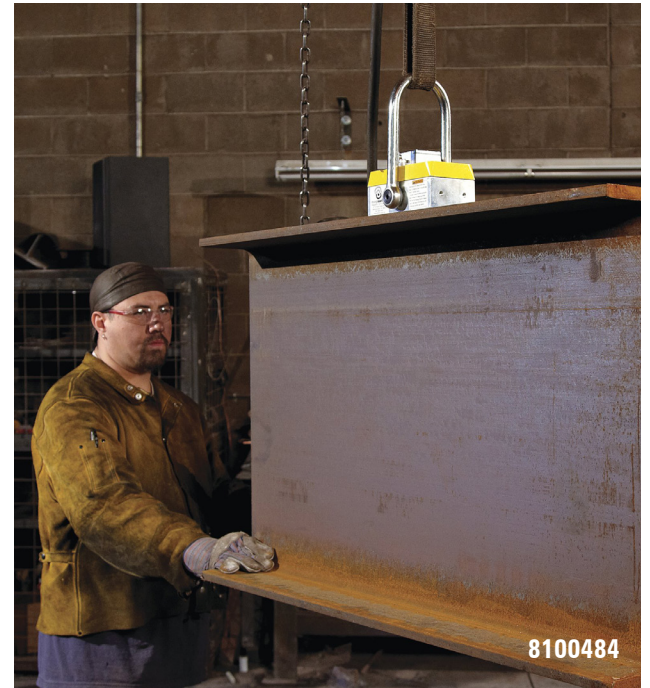
## MLAY1000 Series

For heavy lifting, the MLAY1000 series lifters achieve full hold on approximately 1in (25.4mm) thick steel. These lifters feature our full swivel hook for lifting from the top or the side. Each lifter is manually activated and features a safety lock in both on and off position. The MLAY1000 series features a replaceable pole shoe, ideal for customizing to fit your application. With full field saturation (hold force) at 1.0in (25.4mm), this lifter is ideal for porous material and thick steel.

**\*Pole Shoes Available: MLAY600x2, MLAY600x4, MLAY 1000x2,3,4,6.**



	MLAY600	MLAY600x2	MLAY600x4	MLAY1000	MLAY1000x2	MLAY1000x3	MLAY1000x4	MLAY1000x6	MLAY1000x12
<b>Part #</b>	8100089	8100360	8100364	8100088	8100484	8100403	8100418	8100482	8100549
<b>Max Breakaway (3:1 SWL)</b>	195 lbs (89 kg)	341 lbs (155 kg)	750 lbs (340 kg)	333 lbs (151 kg)	668 lbs (303 kg)	913 lbs (414 kg)	1215 lbs (551 kg)	2034 lbs (922 kg)	4025 lbs (1826 kg)
<b>Height</b>	7.2 in (184 mm)	6.7 in (170.9 mm)	6.6 in (166.5 mm)	10 in (253 mm)	10.5 in (267.5 mm)	10.4 in (264.5 mm)	10.3 in (260.7 mm)	10 in (253.3 mm)	11.9 in (302 mm)
<b>Width</b>	2 in (51.5 mm)	6.5 in (165.4 mm)	6.5 in (165.4 mm)	2.8 in (71.5 mm)	7.7 in (195.6 mm)	7.7 in (195.4 mm)	7.7 in (195.4 mm)	7.7 in (195.4 mm)	12 in (306.8 mm)
<b>Length</b>	4.2 in (106 mm)	8.7 in (221 mm)	9.3 in (236 mm)	5.8 in (147 mm)	12.6 in (318.8 mm)	10.7 in (271.3 mm)	13.8 in (350.3 mm)	20.1 in (510.3 mm)	19.5 in (496 mm)
<b>Weight</b>	4.4 lbs (2 kg)	11.5 lbs (5.2 kg)	17.9 lbs (8.1 kg)	11.5 lbs (5.2 kg)	23.8 lbs (10.8 kg)	36.5 lbs (16.6 kg)	45.2 lbs (20.5 kg)	60.3 lbs (27.4 kg)	121.3 lbs (55 kg)



	MLAY600	MLAY600X2	MLAY 600X4	MLAY1000	MLAY1000X2	MLAY1000X3	MLAY1000x4	MLAY1000X6	MLAY1000X12
<b>Part #</b>	8100089	8100360	8100364	8100088	8100484	8100403	8100418	8100482	8100549
<b>Max. SWL 3:1 Lift Capacity*</b>	195 lbs (89 kg)	341 lbs (155 kg)	750 lbs (340 kg)	333 lbs (151 kg)	668 lbs (303 kg)	913 lbs (414 kg)	1215 lbs (551 kg)	2034 lbs (922 kg)	4025 lbs (1826 kg)
<b>Thin Steel Working Load on 1/4" 3:1 Lift Capacity*</b>	170 lbs (77 kg)	248 lbs (112 kg)	517 lbs (234 kg)	205 lbs (92 kg)	425 lbs (205 kg)	446 lbs (202 kg)	494 lbs (224 kg)	783 lbs (355 kg)	1331 lbs (603 kg)
<b>Full Saturation</b>	600 lbs (272 kg)	1100 lbs (498 kg)	2285 lbs (1036 kg)	1000 lbs (453 kg)	2000 lbs (907 kg)	2733 lbs (1239 kg)	3900 lbs (1769 kg)	6446 lbs (2923 kg)	12000 lbs (5443 kg)


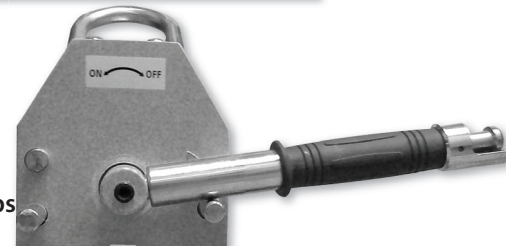
\*SWL (Safe Working Load) =  $\frac{\text{Maximum Force}}{\text{Safety Factor (> 3)}}$

**MAGSWITCH TECHNOLOGY**

☒ Stability ☒ Lift to Shear  
☒ Replaceable Pole Shoe  
**Stronger Hold on Thinner Material**

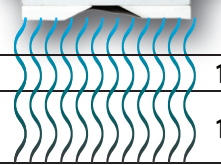
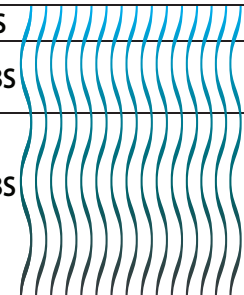
**OLD TECHNOLOGY**

☐ Stability ☐ Lift to Shear  
☐ Replaceable Pole Shoe

**Weight:**  
58 Lbs

**Weight:**  
85-130 Lbs

	
783 LBS	N/A
1,298 LBS	900 LBS
1,872 LBS	1,400 LBS
2,148 LBS	2,000 LBS

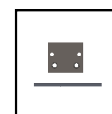
**1/4"**

**1/2"**

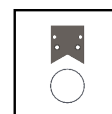
**1"**

**2"**

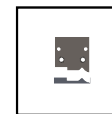
All ratings per ASME 3:1 Safe Working Load



FLAT



ROUND



IRREGULAR

**Requires Pole Shoes**

**Pole Shoes available for the following lifters:**  
 MLAY600x2, MLAY600x4,  
 MLAY1000x2, MLAY1000x3, MLAY1000x4, MLAY1000x6



#### Dual Hook: Stability Control

Use both hooks for safer lifts;  
 the force of the lift stabilizes  
 the magnet and reduces dangerous  
 swings in the load



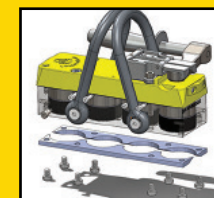
#### Single Hook: Lift from Horizontal to Vertical

Use one swivel hook when  
 lifting from flat to vertical



#### Lock On/Lock Off Handle

Meets or exceeds all domestic  
 and international lifting standards

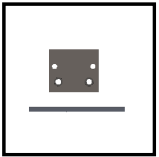


#### Replaceable Pole Shoes

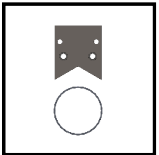
Periodically replace the pole  
 shoes to maintain safety and  
 extend the life of the lifter



# Hand Lifters



FLAT



ROUND

## Single & Dual Hand Lifters

Magswitch Single and Dual Hand Lifters safely pick up hot, sharp or dirty steel with our strong magnets. An ergonomic fixed handle and a lever locking mechanism prevent accidental release.

- Holds flat and round surfaces of steel
- Lightweight and easy to use
- Shallow field magnets allow for de-stacking of thin material
- Adjustability range length allows for versatile uses
- Magnet turns completely On and Off
- Magnet stays clean as you can wipe off debris easily
- Does not require an electrical power source

## Hand Lifter 60M

Magswitch Hand Lifter 60-M is a manual ON and OFF magnetic hand lifter great for dragging sheet and all your small steel handling needs.

- Holds flat and round surfaces of steel
- Pivot handle with multi settings (for sheet dragging) or locking handle vertical for use as a (hand lifter)
- Battery strength indicator light
- No need to manhandle steel or fight magnets in moving steel
- Magnet turns completely On and Off
- Magnet stays clean as you can wipe off debris easily
- Does not require an electrical power source

## Hand Lifter 60CE

Our one-handed magnetic lifter delivers more control with the use of only one hand. Lift and release steel with just push of a button.

- Magnet turns completely On and Off at the push of a button
- Magnet stays clean
- Holds flat and round surfaces of steel
- 100% duty cycle-magnet can stay on forever
- Battery strength indicator light
- Recharges in 20 minutes
- Batteries have 2000 actuations per charge
- Includes charger and 2 rechargeable batteries
- Fail-safe technology



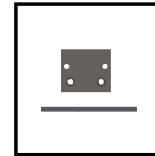
	Dual Hand Lifter 400	Dual Hand Lifter 235	Fixed Hand Lifter 400	Fixed Hand Lifter 235	Hand Lifter 60 M	Hand Lifter 60 CE
<b>Part #</b>	8100822	8100821	8100810	8100795	8100359	8800487
<b>Max Breakaway</b>	751 lbs (341 kg)	431 lbs (196 kg)	375 lbs (170 kg)	216 lbs (98 kg)	216 lbs (98 kg)	198 lbs (89.7 kg)
<b>Height</b>	5.2 in (133.3 mm)	4.4 in (111.4 mm)	5 in (127 mm)	4.1 in (105 mm)	5.5 in (140 mm)	5.3 in (134.6 mm)
<b>Width</b>	7.3 in (184.8 mm)	7.3 in (184.8 mm)	4.9 in (124.3 mm)	4.9 in (124.3 mm)	2.4 in (60 mm)	2.4 in (61 mm)
<b>Length</b>	23 in (583.8 mm)	23 in (583.8 mm)	6.9 in (175.4 mm)	6.9 in (175.4 mm)	5.3 in (134.3 mm)	5.3 in (134.6 mm)
<b>Weight</b>	6 lbs (2.7 kg)	4.2 lbs (1.9 kg)	2.4 lbs (1.1 kg)	1.5 lbs (0.7 kg)	1.6 in (0.7 kg)	2.4 lbs (1.1 kg)

## Heavy Lift Frames

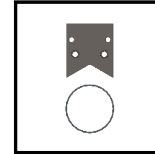
If you lift pipe, I-beams or heavy sheet steel, this is a tool you need in your shop! Magswitch Technology is “Changing the way things are done” once again by introducing the innovative new Heavy Lift Frame Series. This game-changing tool utilizes patented shallow-field technology to lift a single sheet from a stack of material. Enhanced workplace safety is achieved through fail-safe operation, increased strength, efficiency and durability. By providing unique magnetic solutions for new standards of productivity, one man can easily do the work of two!

## Faster, Strong & Safer!

- Patented, powerful shallow-field technology
- Revolutionary in steel lifting / handling
- Scalable technology – customized to meet your needs
- Add additional magnets as needed
- Cordless electric (CE) actuation with remote control allows for easy ON/OFF capability (Available on most heavy lift frames)
- Single sheet de-stack capability
- Onboard battery creates a more compact tool
- Enhanced workplace safety is achieved through fail-safe operation
- Dual Purpose – under hook or forklift
- Benefits include Increased productivity, safety and significant cost savings



FLAT



ROUND



	HLF-8000-M 2 Tool 2 Ton Lifter	HLF-8000-M 3 Tool 3 Ton Lifter	HLF-8000-M 4 Tool 4 Ton Lifter	HLF-8000-M 5 Tool 1 1/2 Ton Lifter
<b>Part #</b>	8800431	8800432	8800596	8800468
<b>Max Breakaway</b>	4000 lbs (1818 kg)	6000 lbs (2727 kg)	8000 lbs (3629 kg)	3000 lbs (1364 kg)
<b>Height</b>	22.5 in (571.5 mm)	22.5 in (571.5 mm)	22.5 in (571.5 mm)	19 in (483 mm)
<b>Width</b>	30.5 in (774.7 mm)	30.5 in (774.7 mm)	30.5 in (774.7 mm)	48 in (1219 mm)
<b>Length</b>	116 in (2946.4 mm)	116 in (2946.4 mm)	116 in (2946.4 mm)	72 in (1829 mm)
<b>Weight</b>	400 lbs (181.4 kg)	460 lbs (208.7 kg)	520 lbs (236 kg)	450 lbs (204 kg)



(6) MLAY600x4 with Cross Beams



**ELAY1000x6  
Electric Lifter**

***Safety is our #1 Priority!***



**\* Product available in black**

# NEW TO MAGSWITCH



## ***Electric ELAY Lifting Series!***

Magswitch is excited to introduce our brand NEW electrically actuated lifter designed with safety in mind! The ELAY series features smart tool technology that will change the way how lifting steel is done! Join the Magswitch revolution!

- Variable Field Output (VFO)
- De-Stack Thin Steel
- 48 Volt DC
- Smart Tool Technology
- Fail-Safe
- No backup battery required
- Power Disconnected – Part stays on!
- Easy button lift and de-stack
- Control Protocol: CANopen
- Pole shoes included. Custom options available
- Different electric lifter sizes coming soon to Magswitch!

<b>Part #</b>	81401247
<b>Max Breakaway</b>	6101 lbs (2768 kg)
<b>Thickness De-Stack</b>	Configurable with VFO
<b>Mount Options</b>	Dual Swivel Hoist Rings
<b>Weight</b>	130 lbs (59 kg)



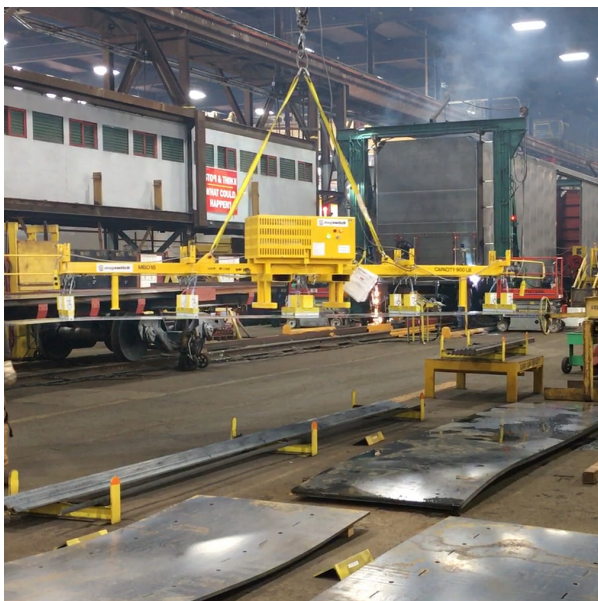
# Heavy Lifting Solutions

Combining the patented Magswitch Technology with plate handling systems, Heavy Lifting Solutions has the answers for your plate handling applications. Eliminate time consuming handling of grabs and chains when you load and unload your burn tables. From manual systems to fully integrated robotic systems, Application Engineers will work side by side with the Magswitch team from design phase to project completion.

## Have a Heavy Lifting Solution?

Contact our Application Engineering Team at [heavyliftingsolutions@magswitch.com](mailto:heavyliftingsolutions@magswitch.com) or visit us [magswitch.com/heavyliftingsolutions](http://magswitch.com/heavyliftingsolutions) or call us at +1 (303) 468.0662

### Custom Lifting Solutions



#### Custom Lifting Application at Gunderson Marine

From small plate applications (4'x8', 5'x10' & 6'x12') to large (8' to 10' x 15' to 60') and to thin material as low as 12 gauge, we will custom design a solution to your specific application.

### RetroFit Lifting Solutions



#### Retrofit Application at Gunderson Marine

If you have a custom application or an odd problem that needs a solution, Magswitch lifters can be adapted to existing spreader bars and retrofitted to keep conversion costs down.

### Ergonomic Lift Assist



#### Press Brake Application at Buyer's Products

Where physical stress due to manually lifting and positioning becomes an issue, Magswitch offers ergonomic material handling equipment that is designed and built to fit each specific application. With safety the most important goal, workplace productivity and efficiency is maximized with each design.



# The Magswitch Advantage

## Safety

Our lifters are designed to be 'fail safe' since there is no need of any power during a lift. With positive indication of magnetic circuit, operator can confidentially perform lift knowing the plate is fully attached. Magswitch offers Electric, Pneumatic or Manual for 'on-off' actuation.

## Performance

Magswitch technology applies maximum hold force at shallow depths enabling consistent strong hold force on thin and thick steel. Our products give consistent, powerful results. 1/3rd the magnet weight of our competitors.

## Flexibility

Magswitch products has flexible options to handle your lifting needs & adapt to odd or round shapes.

## Downtime

Downtime with Magswitch is eliminated unlike traditional steel lifting systems. With a 100% duty cycle, no more standing or waiting around.

## Cost Savings

Electromagnetic and vacuum lifting systems are costly in the long term when it comes to energy and maintenance costs. Magswitch 'greentech' technology will offer you significant savings in energy and repairs while increasing productivity.

